

Customer Information



The document is only valid in pdf format with the vertical stamp on the right margin.

Printed by MO.SCHULZ at 04:10:59 EST 06.08.2021

LEDDL120-CB SM 108W 12/24V Cust. Info

RL 2021-08-06

9C1 4324634-EN-00

SP_SSL_LEDDL104-CB 68W 12/24V Cust. Info

Released
ECM

AM-ENT-IND SSL&EL München 700
Moritz Schulz AMW

External no.:

Template: ZOT 10000028

Page 1 of 4

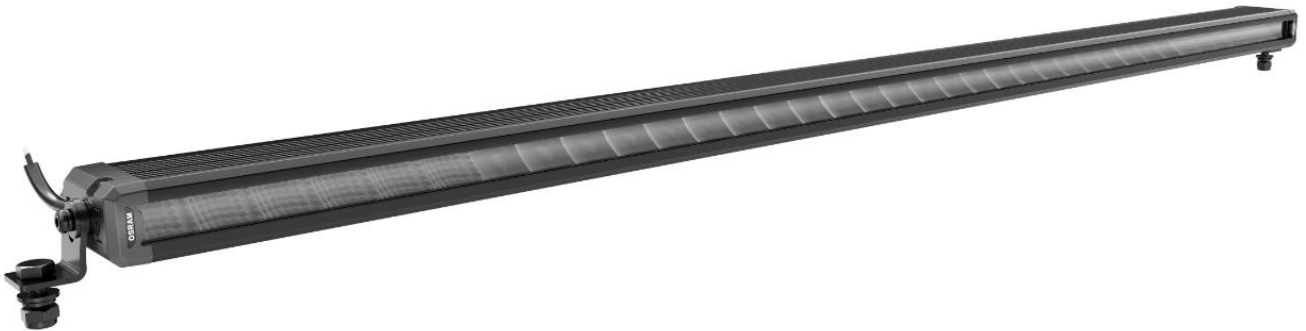
OSRAM GmbH: Chairman of the Supervisory Board: Peter Bauer; Managing Directors: Dr. Olaf Bertien (Chairman), Kathrin Dahnke, Dr. Stefan Kampmann;
Registered office: Munich; Commercial registry: Munich, HRB 201526; WEEE-Reg.-No. DE 71568000

Lightbar VX1000-CB SM - Customer Information Sheet

LEDDL120-CB SM 12/24V



(Mounting option 1)



(Mounting option2)



#OSRAM OLQ(V)
#MO.SCHULZ
#700 #MO.SCHULZ

#AMW #LEDDL120-CB SM 108W 12/24V Cust. Info

2021-08-06
#RL-Released
9C1 4324634-EN-00

Customer Information



The document is only valid in pdf format with the vertical stamp on the right margin.

Printed by MO.SCHULZ at 04:10:59 EST 06.08.2021

LEDDL120-CB SM 108W 12/24V Cust. Info

RL 2021-08-06

9C1 4324634-EN-00

SP_SSL_LEDDL104-CB 68W 12/24V Cust. Info

Released
ECM

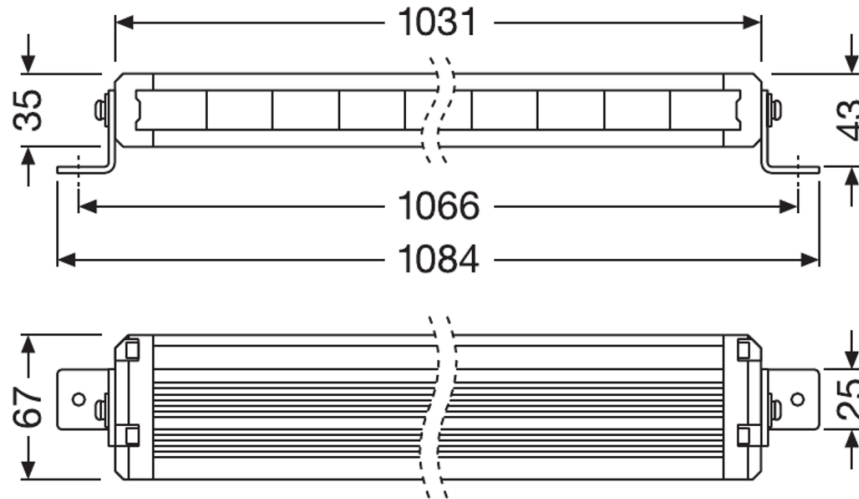
AM-ENT-IND SSL&EL München 700
Moritz Schulz AMW

External no.:

Template: ZOT 10000028

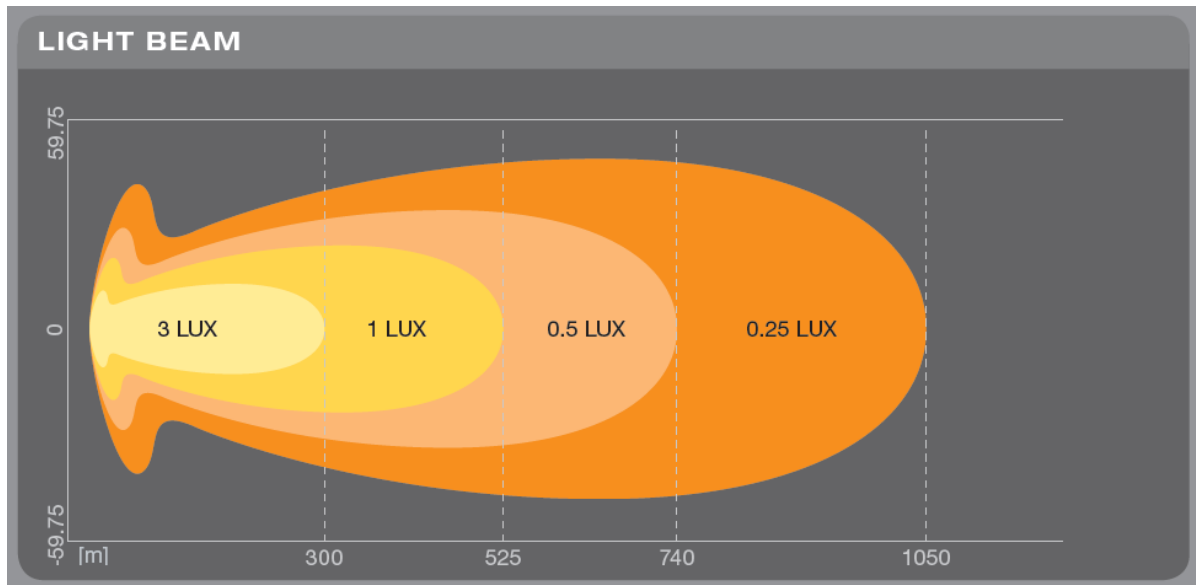
Page 2 of 4

OSRAM GmbH: Chairman of the Supervisory Board: Peter Bauer; Managing Directors: Dr. Olaf Bertien (Chairman), Kathrin Dahnke, Dr. Stefan Kampmann;
Registered office: Munich; Commercial registry: Munich, HRB 201526; WEEE-Reg.-No. DE 71568000



General tolerances in accordance with ISO 2768-v (Allgemeine Toleranzen nach ISO 2768-v)

Light distribution (Lichtverteilung)



Packaging content (Verpackungsinhalt)

No.	Part Name	Description	Qty
1	lamp	housing aluminium	1
2	L-bracket L	stainless steel	2
3	screw M6x12	stainless steel	2
4	spring washer M6	stainless steel	2
5	rubber washer M6	rubber	2
6	screw M8x20	stainless steel	4
7	spring washer M8	stainless steel	4

#OSRAM 0LQ(V)
#MO.SCHULZ
#700 #MO.SCHULZ
#Info
#AMW #LEDDL120-CB SM 108W 12/24V Cust. Info
#2021-08-06
#RL-Released
#9C1 4324634-EN-00

Customer Information



The document is only valid in pdf format with the vertical stamp on the right margin.

Printed by MO.SCHULZ at 04:10:59 EST 06.08.2021

LEDDL120-CB SM 108W 12/24V Cust. Info

RL 2021-08-06

9C1 4324634-EN-00

SP_SSL_LEDDL104-CB 68W 12/24V Cust. Info

Released
ECM

AM-ENT-IND SSL&EL München 700
Moritz Schulz AMW

External no.:

Template: ZOT 10000028

Page 3 of 4

OSRAM GmbH: Chairman of the Supervisory Board: Peter Bauer; Managing Directors: Dr. Olaf Bertien (Chairman), Kathrin Dahnke, Dr. Stefan Kampmann;
Registered office: Munich; Commercial registry: Munich, HRB 201526; WEEE-Reg.-No. DE 71568000

8	plain washer M8	stainless steel	4
9	Nyloc nut M8	stainless steel	4
10	plain washer M6	stainless steel	4
11	rear bracket	aluminium	4
12	rubber spacers	rubber	4
13	screw M6x16	stainless steel	4
14	nut M6	stainless steel	4

Standards and regulations (Normen und Vorschriften)

EMC/EMI	ECE R10
IP Class	IP67
ECE	ECE R10, 2x R112 (37,5 + 37,5)
Other legal requirements	SAE

Electrical and photometrical data (Elektrische und lichttechnische Daten)

Characteristics (Messwert)	Symbol	Unit (Einheit)	Major / Minor	Tolerance (Toleranz) [%]
Voltage (Spannung)	U	V	12/24V	9V-30V
Wattage (Leistung) @25°C	P	W	108W	±10%
Steady State luminous flux (Lichtstrom) (30min. @25°C & 13,2V Goniometer: Vertical & horizontal : ±90°)	Φ	lm	6000lm	±10%

Life time (Lebensdauer)

Test (Prüfung)			
Life time average (@25°C)	Tc	h	5.000

Further specifications (Weitere Spezifikationen)

Test (Prüfung)	Rated value (Sollwert)	Test specification (Norm)
Color temperature (Farbtemperatur)	Cold White (6000K)	+/- 500K
Ambient Temperature range (Ta)	25°C	-30°C~+65°C
Storage Temperature range (Ts)	25°C	-40°C~+85°C
Derating, dimming	NTC overheat protection	
Light distance @1lx	≥525m	
Number of LED's	36 pcs.	
Weight (light + application material)	2840g	
Connector	No	
Wire length	45cm	
Polarity	Polarity Protection	

Process of manufacturing (Fertigungsprozess)

This product is designed and manufactured for the Automotive Aftermarket. Please consider the product specification to match the customer requirements. Dieses Produkt wurde für den Aftermarket entwickelt und produziert. Es ist unabdingbar, die Produktspezifikation mit den Kundenanforderungen abzugleichen.

Successive listing of changes (Änderungsfortschreibung)

#OSRAM 0LQ(V)
#MO.SCHULZ
#700 #MO.SCHULZ

#AMW #LEDDL120-CB SM 108W 12/24V Cust. Info
#2021-08-06
#RL-Released
#9C1 4324634-EN-00

Customer Information



The document is only valid in pdf format with the vertical stamp on the right margin.

Printed by MO.SCHULZ at 04:10:59 EST 06.08.2021

LEDDL120-CB SM 108W 12/24V Cust. Info

RL 2021-08-06

9C1 4324634-EN-00

SP_SSL_LEDDL104-CB 68W 12/24V Cust. Info

Released

AM-ENT-IND SSL&EL München 700

ECM

Moritz Schulz AMW

External no.:

Template: ZOT 10000028

Page 4 of 4

OSRAM GmbH: Chairman of the Supervisory Board: Peter Bauer; Managing Directors: Dr. Olaf Bertien (Chairman), Kathrin Dahnke, Dr. Stefan Kampmann;
Registered office: Munich; Commercial registry: Munich, HRB 201526; WEEE-Reg.-No. DE 71568000

Issue (Ausgabe):	Reason for change (Änderungsgrund):
05.08.2021	First Version

#OSRAM OLQ(V)
#MO.SCHULZ
#700 #MO.SCHULZ

#AMW #LEDDL120-CB SM 108W 12/24V Cust. Info
2021-08-06
#RL-Released
9C1 4324634-EN-00