

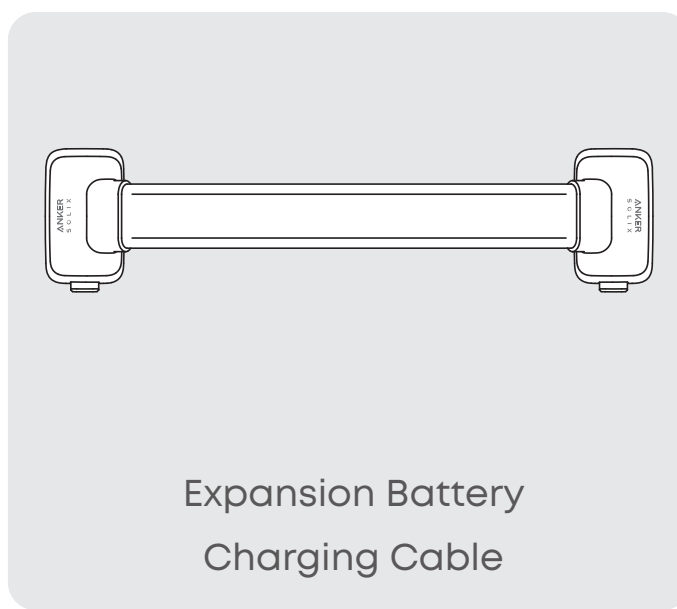
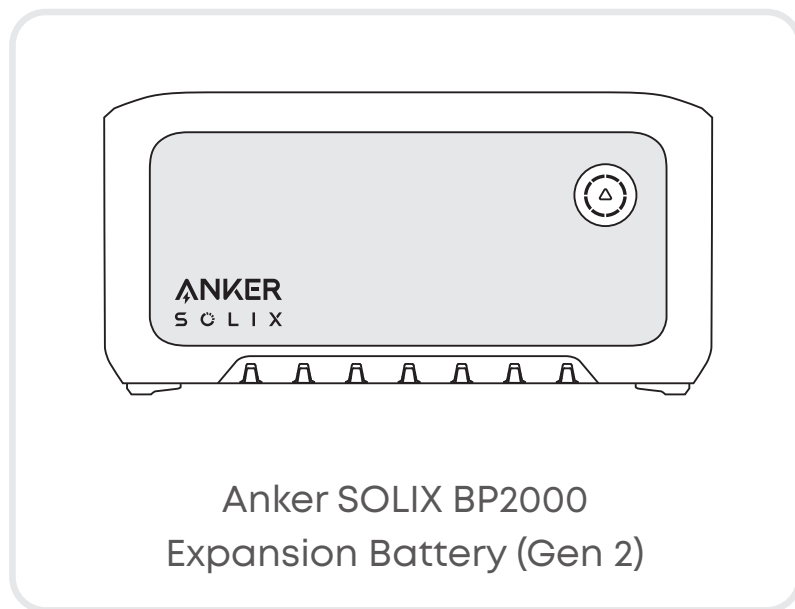
**What's in the Box**

**Product Overview**

**How to Use**

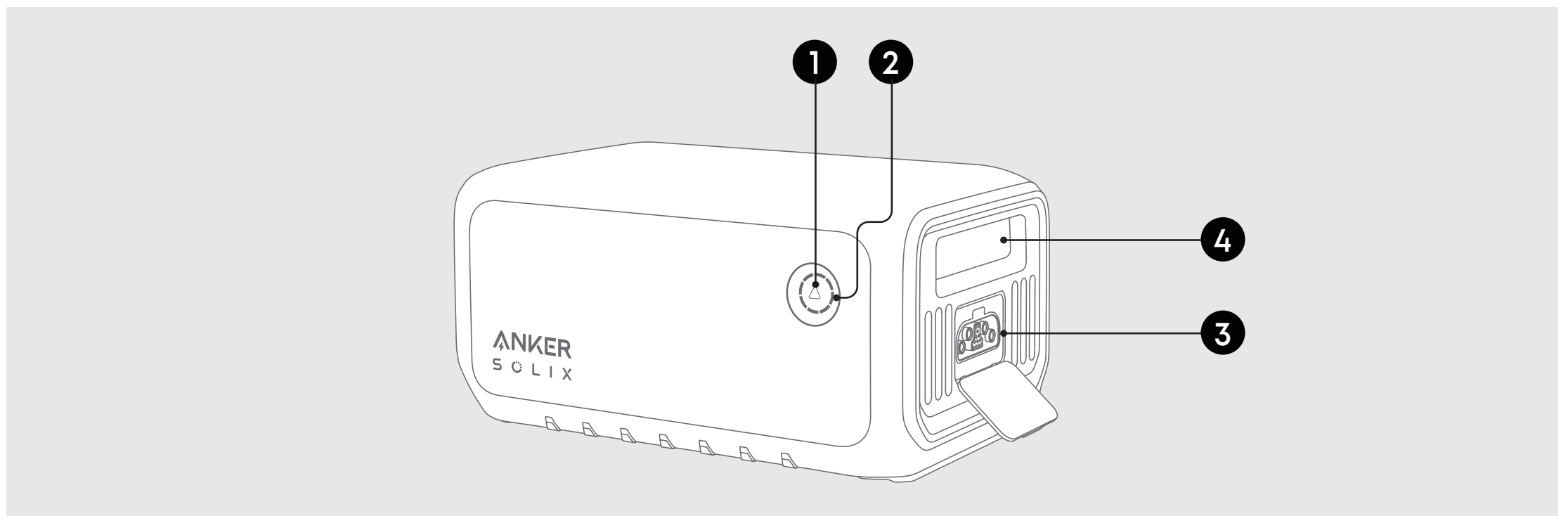
**Specifications**

## What's in the Box



\*The expansion battery must be connected to the power station for charging and discharging and cannot be used separately.

## Product Overview



1 On/Off Button

2 LED Wheel

3 Expansion Battery Port

4 Handle

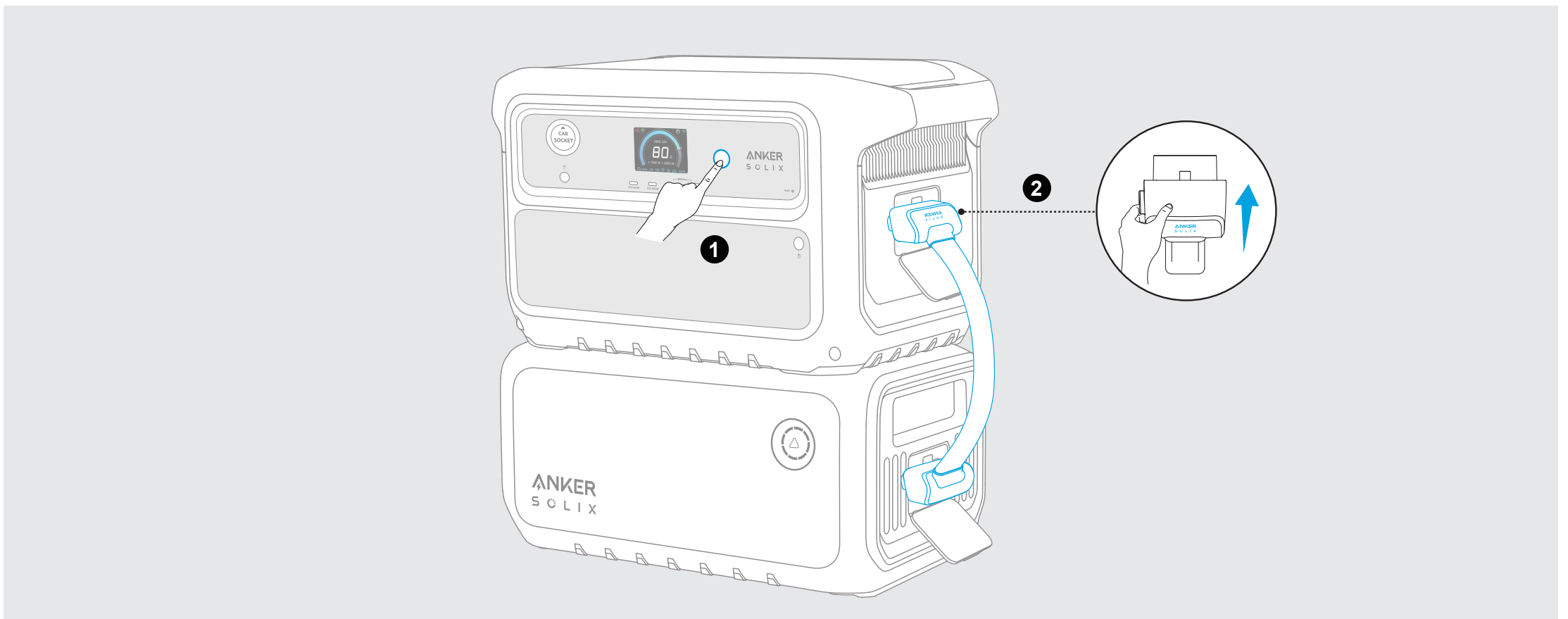
**On/Off Button:** Press the button for 3 seconds to turn the expansion battery on or off.


**Expansion Battery Port:** Connect the expansion battery to the power station with the expansion battery charging cable via this port.

**LED Wheel:** Flashes blue continuously while charging. When not charging, short press the on/off button to illuminate the light wheel and display the current battery level.

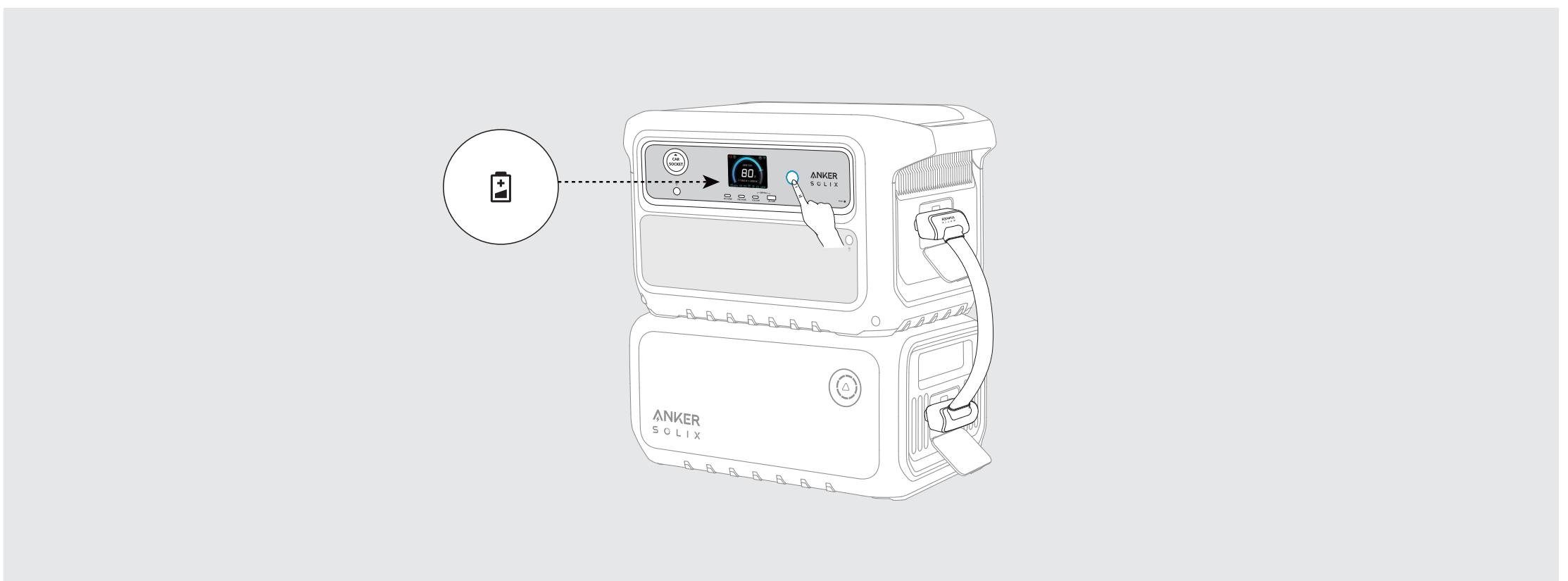
## How to Use

Power on the power station and connect the expansion battery to the power station with the charging cable. Ensure the Anker SOLIX logo on the charging cable faces outward. You will hear a beep if the connection is successful.

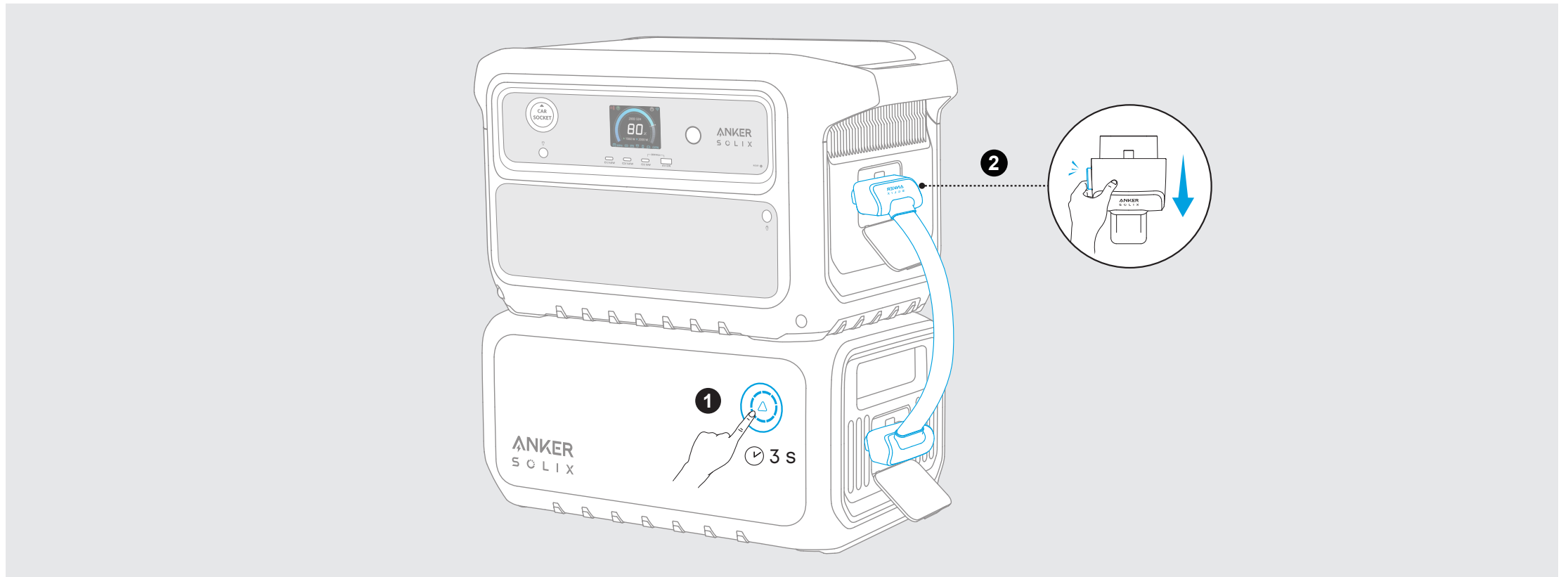


If your power station is powered on and the expansion battery is successfully connected, the  and the remaining power level of the expansion battery will appear on the power station's screen.

- **Discharging:** The connected expansion battery will be discharged prior to the power station.
- **Recharging:** The connected expansion battery will be charged after the power station is fully charged.



If you need to disconnect the power station from the expansion battery during use, press the on/off button of expansion battery for 3 seconds to turn it off. Then unplug the charging cable.



## Specifications

<b>Capacity</b>	51.2 Vd.c. / 40000 mAh / 2048 Wh
<b>Voltage Range</b>	40V to 58.4V
<b>Expansion Battery Port Charging</b>	58A Max
<b>Expansion Battery Port Discharging</b>	77A Max
<b>Battery Type</b>	LiFePO4
<b>Compatible Power Station</b>	Anker SOLIX C2000 Gen 2 Portable Power Station, Anker SOLIX C2000X Gen 2 Portable Power Station, Anker SOLIX C2000 Gen 2 Plus Portable Power Station
<b>Max. Short Circuit Current and Duration</b>	1300A / 5 ms
<b>Discharging Temperature</b>	-20°C to 40°C / -4°F to 104°F
<b>Charging Temperature</b>	0°C to 40°C / 32°F to 104°F
<b>Net Weight</b>	15.3 kg / 34 lb
<b>Dimensions</b>	395.5 × 197.5 × 229 mm / 15.57 × 7.78 × 9.02"